

## G $\alpha$ <sub>14</sub>

**Catalog Number:** 26027

**Gene Symbol:** GNA14

**Description:** Anti-G $\alpha$ <sub>14</sub> Mouse Monoclonal Antibody

**Background:** Heterotrimeric G proteins are essential cellular signal transducers. G $\alpha$ <sub>14</sub> is a member of the Gq subfamily of G proteins. G $\alpha$ <sub>14</sub> is known to stimulate phospholipase C. Other biochemical and physiological functions of G $\alpha$ <sub>14</sub> are being explored.

**Immunogen:** A synthetic peptide from the C-terminal region of human G $\alpha$ <sub>14</sub>.

**Tested applications:** ELISA, WB, IHC, IP

**Recommended dilutions:**

ELISA 1:100-1:5000

WB 1:100-1:2000

IHC 1:50-1:100

**Concentration:** 1 mg/ml

**Host:** mouse

**Clonality:** Monoclonal

**Isotype:** IgG

**Purity:** Purified from ascites

**Format:** Liquid

**Storage buffer:**

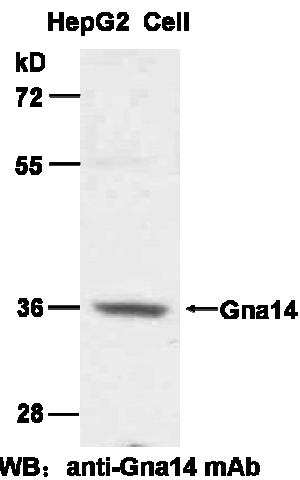
Preservative: no

Constituents: PBS (without Mg<sup>2+</sup> and Ca<sup>2+</sup>), pH 7.4, 150 mM NaCl, 50% glycerol

**Species Reactivity:** G $\alpha$ <sub>14</sub> antibody recognizes G $\alpha$ <sub>14</sub> of vertebrates.

**Storage Conditions:** Store at -20°C. Avoid freeze / thaw cycles

**Western blot:**



HepG2 whole-cell lysate was used for western blot (cat# 26027).